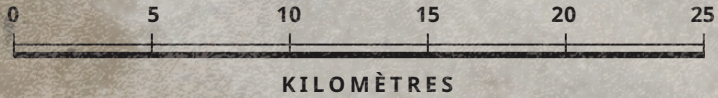


SUD-OUEST VIRGINIE



1
2
3
4
5
6
7
8
9
10
11
12

A B C D E F G H I J K L M N O P

NEW CASTLE VIRGINIE

FINCASLE VIRGINIE

BUCHANAN

AMHERST VIRGINIE

LYNCHBURG

MADISON HEIGHTS

ROANOKE

BEDFORD

RUSTBURG

BLACKSBURG

ELLISTON

CAVE SPRING

WESTLAKE CORNER

ALTAVISTA

BROOKNEAL

BOONES MILL

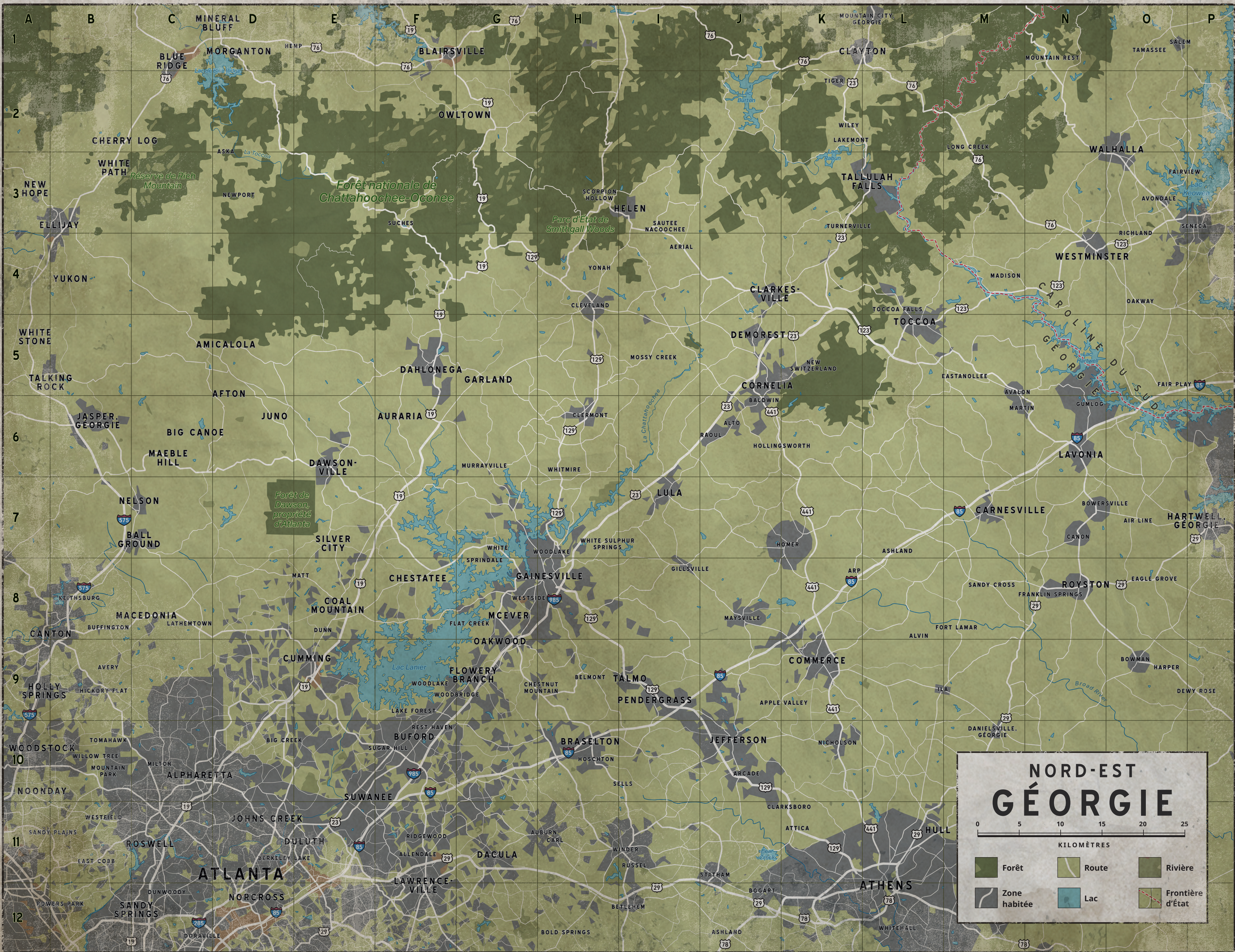
ROCKY MOUNT VIRGINIE

GRETTA

FERRUM

CHATHAM VIRGINIE

Paro d'Etat de Harry Stone



NORD-EST GÉORGIE

0 5 10 15 20 25
KILOMÈTRES

Forêt	Route	Rivière
Zone habitée	Lac	Frontière d'état